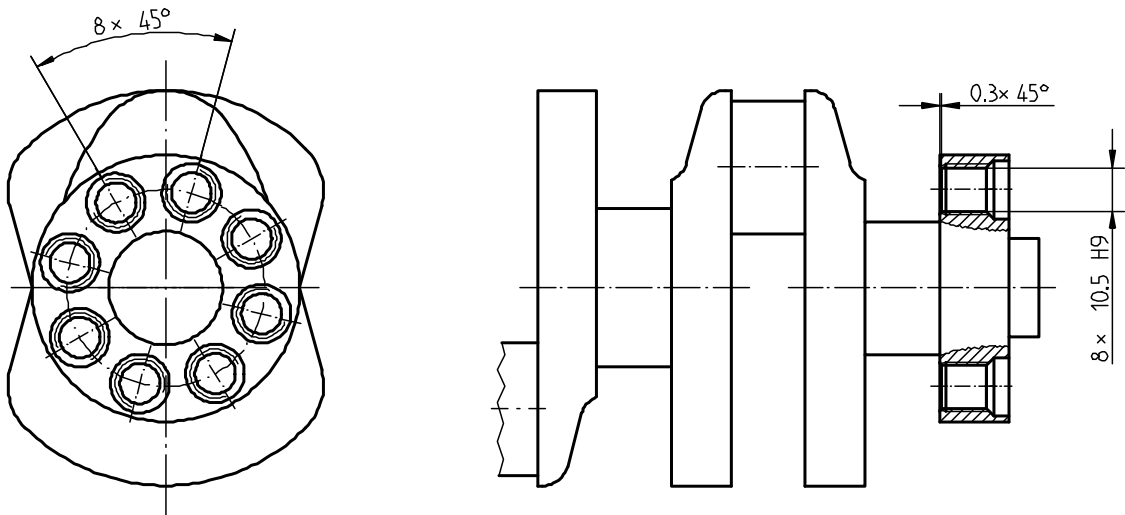
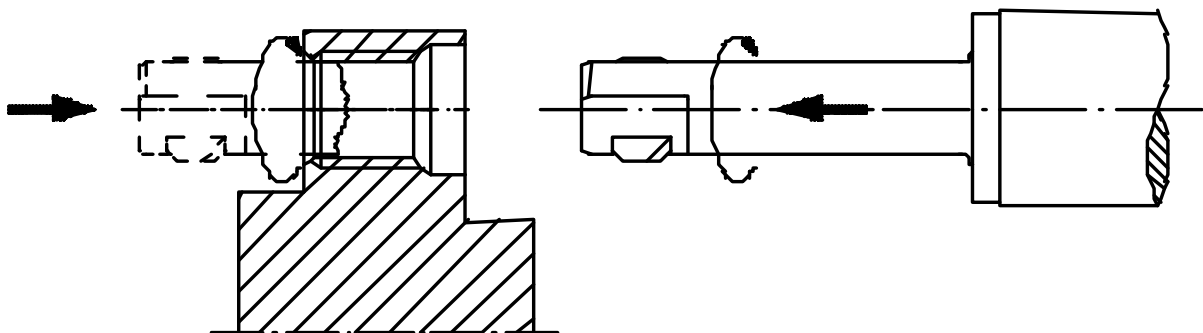


Industry	Automobile
Work piece	Crank shaft
Material	Steel
What is machined	A chamfer of 0.3x45° backward will be made to the thread M12

Sketch of work piece



Sketch of tool and work piece



Tool	GH-S 10-12/30 (baldes backwards cutting only)
Speed	500 1/min
Feed	0.08 mm/rev
Coolant	Emulsion
Notes	In one single work operation without stopping or reversing the spindle.